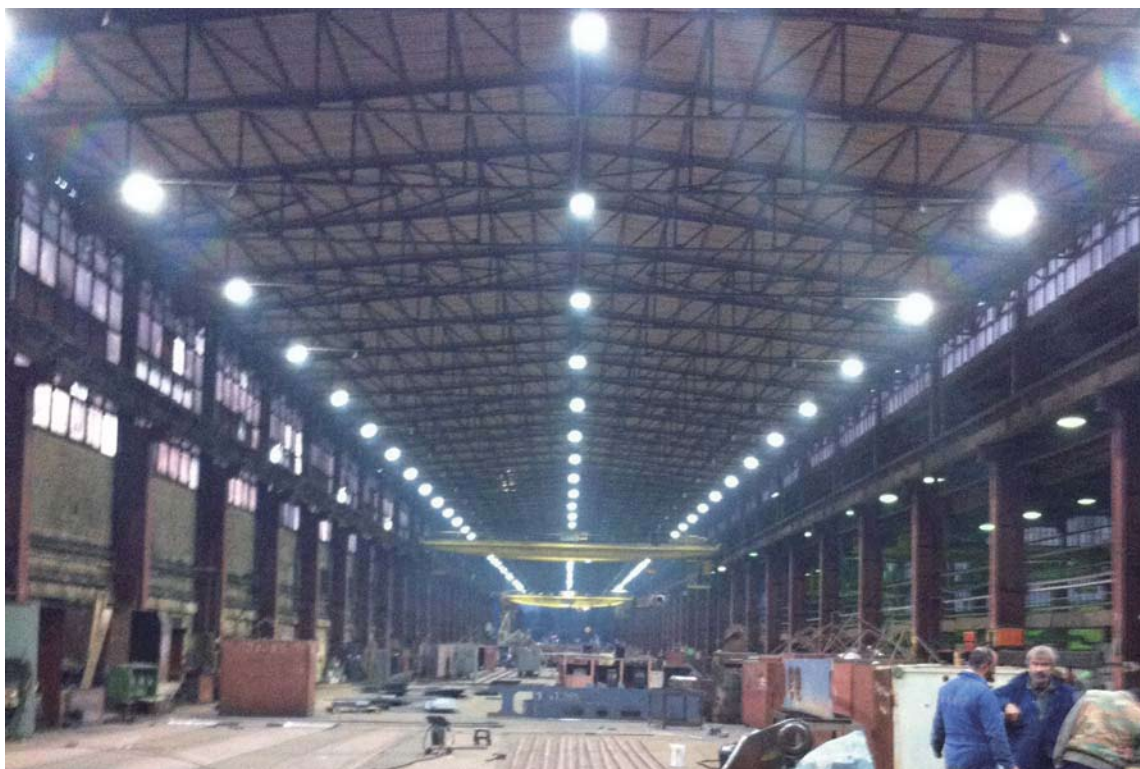




**5 ANS
GARANTIE**



SPECIFICATIONS

| REFERENCES | PUISSANCE | QUANTITE DE LED | LED MARQUE | LUMENS | CERTIFICATIONS |
|----------------------|-----------|-----------------|-----------------|--------|----------------|
| PLAFON-IND-3030-40W | 40W | 1 | PHILIPS 3030 2D | 5200 | CE/ROHS |
| PLAFON-IND-3030-50W | 50W | | | 6250 | CE/ROHS |
| PLAFON-IND-3030-80W | 80W | 2 | | 10400 | CE/ROHS |
| PLAFON-IND-3030-100W | 100W | | | 12500 | CE/ROHS |
| PLAFON-IND-3030-120W | 120W | 3 | | 15600 | CE/ROHS |
| PLAFON-IND-3030-150W | 150W | | | 18750 | CE/ROHS |
| PLAFON-IND-3030-160W | 160W | | | 20800 | CE/ROHS |
| PLAFON-IND-3030-200W | 200W | 4 | | 25000 | CE/ROHS |
| PLAFON-IND-3030-200W | 200W | | | 26000 | CE/ROHS |
| PLAFON-IND-3030-240W | 240W | 5 | | 30000 | CE/ROHS |

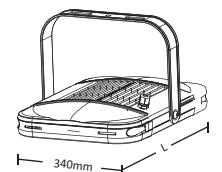
INFORMATIONS COMPLEMENTAIRES

| | |
|----------------------|--------------------------------|
| Voltage | 100-240 /277Vac /50 /60Hz |
| CRI | >70 |
| Protection | IP66, IK10 |
| Efficacité lumineuse | 125~130lm /w |
| Materiaux | Alliage d'Aluminium |
| Installation | Ajustable selon l'installation |
| Maintenance | L70>100,000 hours |

INFORMATIONS POUR DEVIS

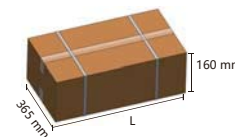
| | |
|-------------|------------------------------------|
| Designation | Lanterne-Led-Model_Lampe-puissance |
| Marque | EnergieDouce |
| LED Marque | PHILIPS LUXEON 3030 2D |
| Angle | 60°, 90°, 110° |
| Chaleur | 4000 /5000 /5700K |
| Coloris | Argent |
| En option | - |

DIMENSIONS



| NOMBRE DE LED(S) | 1 | 2 | 3 | 4 | 5 |
|------------------|--------|--------|--------|--------|--------|
| "L" Longueur | 166 mm | 239 mm | 312 mm | 285 mm | 458 mm |
| H | 165 mm | | | | |
| H avec anse | 190 mm | 227 mm | 263 mm | 300 mm | 336 mm |
| Poids | 3.0 kg | 4.3 kg | 5.2 kg | 6.1 kg | 7.1 kg |

EMBALLAGE



| NOMBRE DE LANTERNE(S) | 1 | 2 | 3 | 4 | 5 |
|-----------------------|--------|--------|--------|--------|--------|
| "L" Longueur | 285 mm | 355 mm | 430 mm | 505 mm | 580 mm |
| Poids | 3.0 kg | 4.3 kg | 5.2 kg | 6.1 kg | 7.1 kg |

FLUX LUMINEUX

