

# EDS-2 (150–500L)

## TECHNICAL SPECIFICATIONS

<b>Material</b>	Steel Sheet
<b>Welding</b>	Automatic Metal Welding
<b>Protection Coating</b>	High Quality Glass – Enamel and protection Anode
<b>Maximum Working Pressure</b>	10 bar
<b>Water Test Pressure</b>	15 bar
<b>Maximum Operating Temperature</b>	95°C
<b>Insulation</b>	Polyurethane foam of 55 mm thickness. Density 52 kg/m <sup>3</sup>
<b>Coil</b>	Steel tube
<b>Maximum Coil Test Pressure</b>	25 bar
<b>Electric Resistance</b>	Upon Request
<b>External Cover</b>	Soft pvc, color of your choice

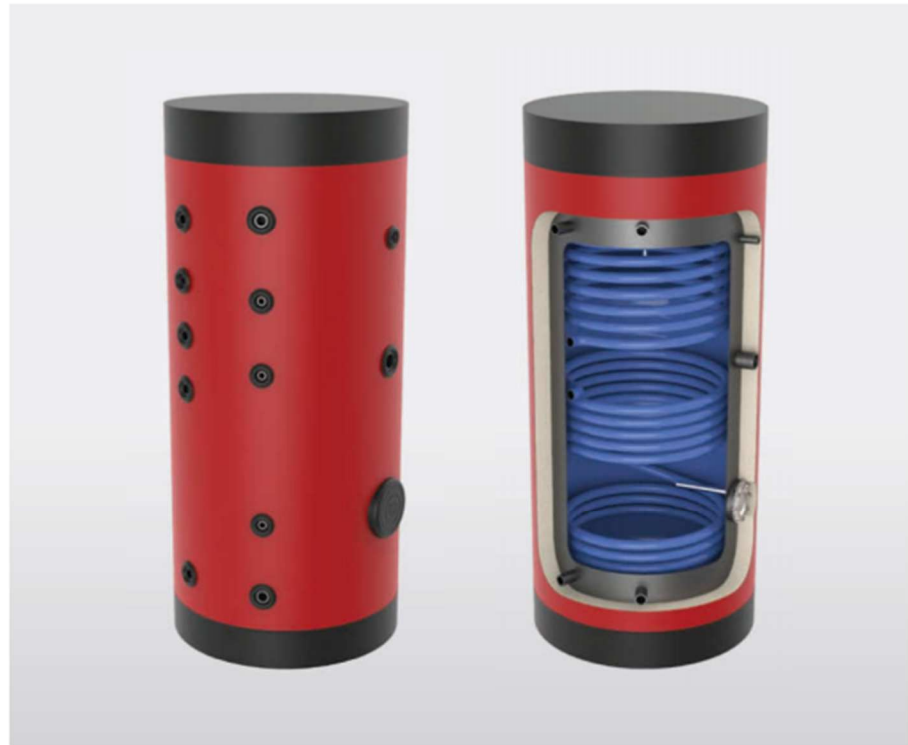
TYPE		150L		200L		300L		500L	
PART NUMBER		EDS-2 150		EDS-2 200		EDS-2 300		EDS-2 500	
-	Tank capacity (Liter)	136		192		280		446	
-	Coil S1/S2 capacity (Liter)	4,66 / 2,67		5,98 / 4,66		9,91 / 5,98		12,55 / 7,27	
K	Coil S1 inlet (CI1)	1"	547	1"	669	1"	818	1"	866
N	Coil S2 inlet (CI2)		849		1114		1343		1396
J	Coil S1 outlet (CO1)		217		209		218		251
M	Coil S2 outlet (CO2)		669		834		1043		1036
-	Coil S1/S2 surface (m <sup>2</sup> )	0,78 / 0,47		0,98 / 0,78		1,55 / 0,98		1,97 / 1,14	
-	Coil S1/S2 Efficiency (kw)	19,24 / 11,59		24,17 / 19,24		38,23 / 24,17		48,59 / 28,12	
B	Recirculation (R)	3/4"	759	3/4"	989	3/4"	1243	1"	1206
A	Cold Water Inlet (CWI)	1"	217	1"	209	1"	218	1"	241
O	Hot Water Outlet (HWO)		854		1140		1383		1416
C	Thermostat (T)	1/2"	753	1/2"	1039	1/2"	1198	1/2"	1176
G	Thermometer (TR)		839		1135		1318		1336
P	Sensor (S)		347		314		443		476
L	Sensor (S)		608		749		931		951
E	Free outlet (FR)	1 1/2"	608	1 1/2"	749	1 1/2"	931	1 1/2"	951
F	Boiler cleaning hole	Ø140	385	Ø140	402	Ø140	453	Ø140	471
-	Anode	22x200	22x200	22x400	22x200	32x500	22x400	32x500	32x500
H	Total height	1120		1400		1620		1700	
D	External Diameter	560		600		630		750	
Dt	Internal Diameter	450		480		520		640	
-	Tilt height (mm)	1217		1475		1728		1838	
-	Weight (kg)	71		92		122		161	



**AVAILABLE EXTERNAL SHELL COLOURS  
(FOR SOFT PVC)**



**AVAILABLE EXTERNAL SHELL MATERIALS**



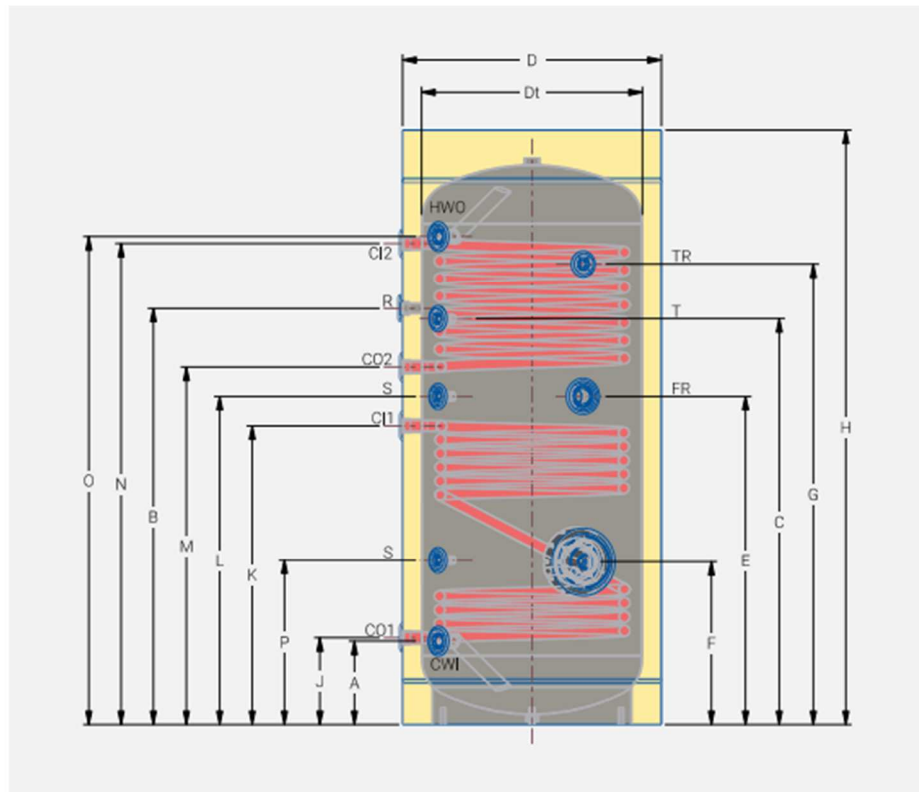
**AVAILABLE INNER TANK & COIL MATERIALS**



**CERTIFICATIONS**



For all the tanks, enameled and combination ones, it is necessary to install an expansion vessel, a security valve and a protection anode for the hot domestic water.



# EDS-2 (750 & 1000L)

## TECHNICAL SPECIFICATIONS

<b>Material</b>	Steel Sheet
<b>Welding</b>	Automatic Metal Welding
<b>Protection Coating</b>	High Quality Class – Enamel and protection Anode
<b>Maximum Working Pressure</b>	10 bar
<b>Water Test Pressure</b>	15 bar
<b>Maximum Operating Temperature</b>	95°C
<b>Insulation</b>	Removable Soft Polyurethane foam of 100 mm thickness. Density 20 kg/m <sup>3</sup>
<b>Coil</b>	Steel tube
<b>Maximum Coil Test Pressure</b>	25 bar
<b>Electric Resistance</b>	Upon Request
<b>External Cover</b>	Soft pvc, color of your choice

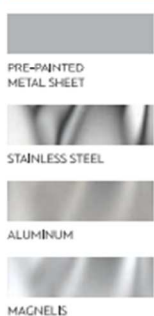
TYPE		750L		1000L	
PART NUMBER		EDS-2 750		EDS-2 1000	
-	Tank capacity (Liter)	716		828	
-	Coil S1/S2 capacity (Liter)	15,2 / 8,59		19,1 / 12,55	
K	Coil S1 inlet (CI1)	1"	942	1"	1040
N	Coil S2 inlet (CI2)		1422		1664
J	Coil S1 outlet (CO1)		292		265
M	Coil S2 outlet (CO2)		1082		1215
-	Coil S1/S2 surface (m <sup>2</sup> )	2,38 / 1,35		3 / 1,97	
-	Coil S1/S2 Efficiency (kw)	58,70 / 33,30		73,99 / 48,59	
B	Recirculation (R)	1"	1272	1"	1492
A	Cold Water Inlet (CWI)	1 1/2"	292	1 1/2"	275
O	Hot Water Outlet (HWO)		1422		1655
C	Thermostat (T)	1/2"	1272	1/2"	1482
G	Thermometer (TR)		1382		1660
P	Sensor (S)		492		500
L	Sensor (S)		1012		1127
E	Free outlet (FR)	1 1/2"	1012	1 1/2"	1127
F	Boiler cleaning hole	Ø170	502	Ø170	470
-	Anode	32x500	32x500	32x500	32x500
H	Total height	1780		2020	
D	External Diameter	1000		1000	
Dt	Internal Diameter	800		800	
-	Tilt height (mm)	2040		2230	
-	Weight (kg)	247		277	



**AVAILABLE EXTERNAL SHELL COLOURS (FOR SOFT PVC)**



**AVAILABLE EXTERNAL SHELL MATERIALS**



**AVAILABLE INNER TANK & COIL MATERIALS**



**CERTIFICATIONS**



For all the tanks, enameled and combination ones, it is necessary to install an expansion vessel, a security valve and a protection anode for the hot domestic water.

